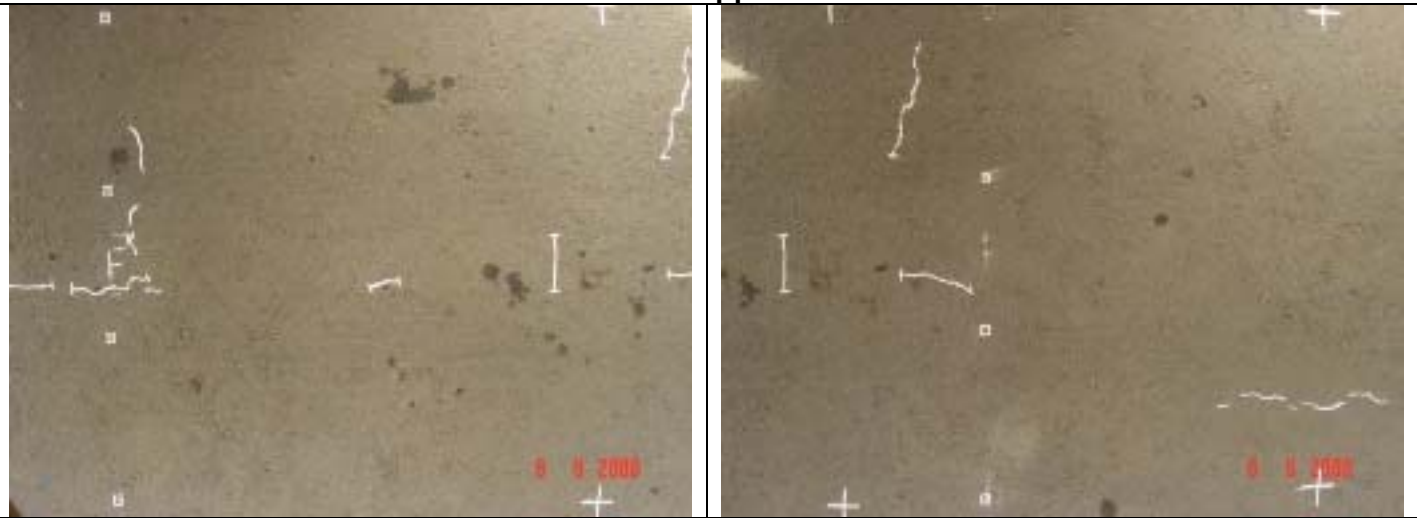


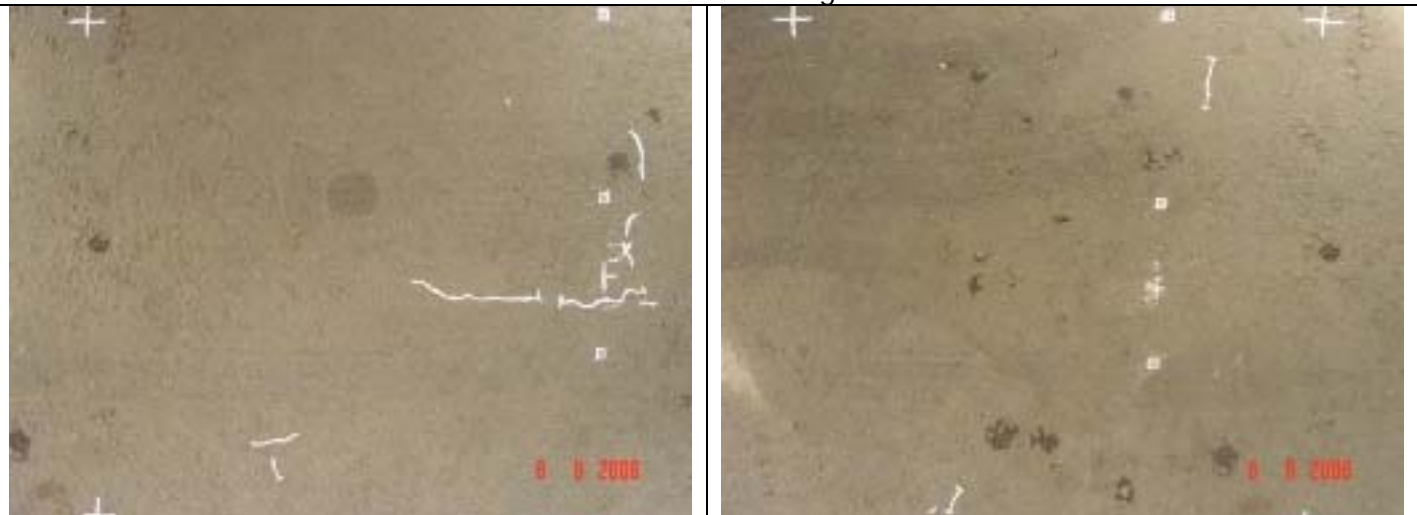
Appendix F

SECTION 4B – MLS10

Zero Axle Applications



Plan view of sections before commencement of traffic loading



Plan view of sections before commencement of traffic loading

After 100 000 70 kN load applications



Plan view of sections after first 100 000 70 kN axles of traffic loading

After 100 000 70 kN Load Applications



Asphalt cracks with fine base material pumping through



Asphalt cracks with fine base material pumping through



Plan view of test sections, note vertical asphalt and diagonal in plane shear cracking



Plan view of test sections, note vertical asphalt and diagonal in plane shear cracking

SECTION 4B – BLOCK PHOTOS
150 000k



Top of CTB after extraction of HMA and side view of vertical HMA shear



Side view of vertical HMA shear and plan view of CTB block before extraction



Pictorial view of extracted blocks

APPENDIX F



Pictorial view of extracted blocks



Side views of removed HMA mat note interface surfaces smoothed through shear fatigue



Plan view of HMA slab note smoothed surfaces. Top view of CTB block before extraction – Test pit 2

APPENDIX F



Plan view of HMA slab note smoothed surfaces. Test pit 3. Pictorial view of extraction of CTB blocks with hydraulic jacks



Plans views of CTB blocks from test pits 2 and 3 note longitudinal cracks



Pictorial overview of blocks and extraction of top part of CTB. Note mid layer shear plane intersecting with longitudinal and transverse cracks

APPENDIX F



Pictorial overview of extraction. Plan view of CTB block. Note smoothed top surface.



Plan view of CTB block. Note smoothed top surface.



Plan and side view of CTB block. Note smoothed top surface.

APPENDIX F



Pictorial views of diagnostic trench after excavation.



Pictorial views of diagnostic trench after excavation.



Removed CTB blocks from test pits 2 and 3. Note longitudinal cracks in direction of wheel travel and in plane shear cracking at the middle of the combined HMA and CTB structure.

APPENDIX F



Plan view of extracted CTB blocks.